

# Hyperion Valve

## Features

- This valve has built in check valve, pilot relief valve.
- Valve is designed to protect both pump and cylinder from over pressure situations.
- Minimal pressure drop across the ports.
- Relief valve setting is independent of flow
- Spool bore leak is as low as 15ml/min at 100bar.
- Optimal design of metering notches ensures smooth tapering of flow. This will avoid the back pressure on the pump and impact load on the tipper chassis.
- Precise control of spool movement for proportional control ensures smooth lowering with load.
- Lowering timing can be adjusted to suit customer requirement\*.
- No throttling effect during relief opening at high pressure .

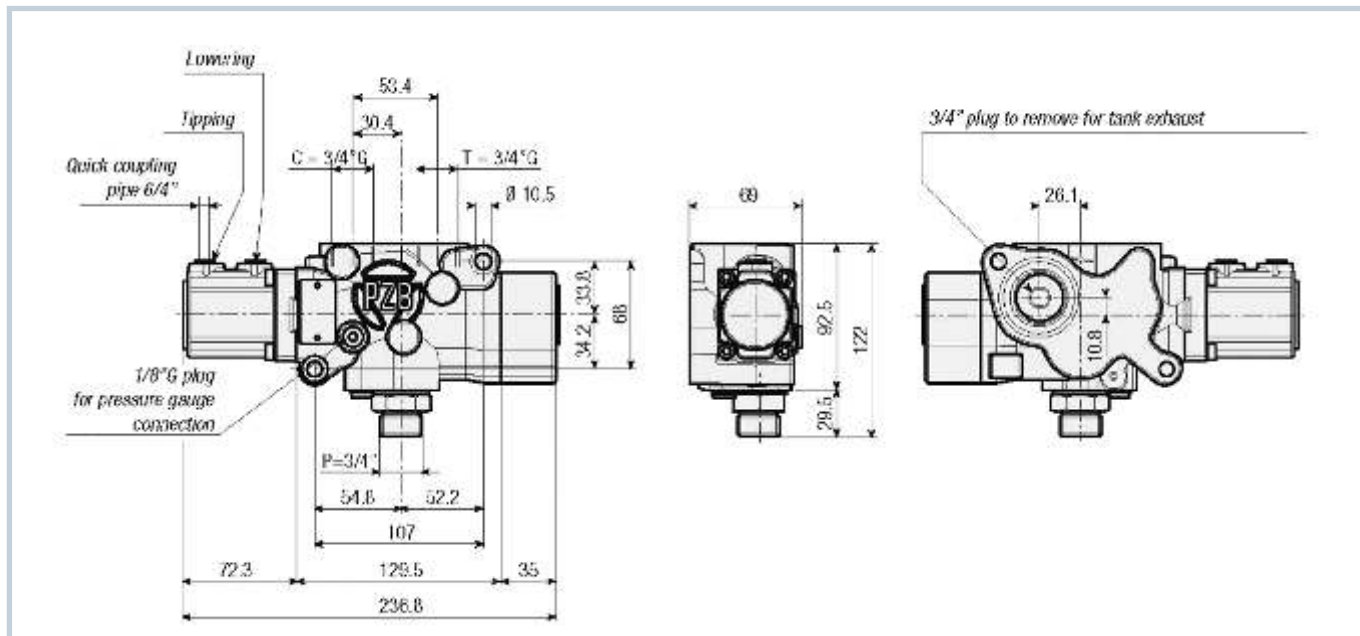


# Hyperion Valve



A New Horizon in Hydraulic Power

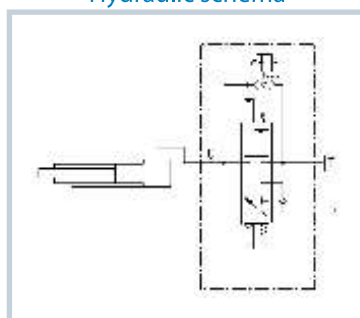
## TECHNICAL DRAWING



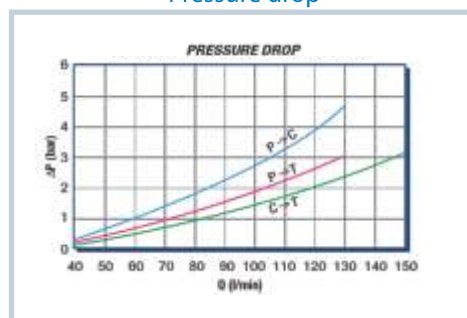
## TECHNICAL SPECIFICATIONS

Flow rate	70-130 l/min	Fluid temperature °C (t)	-25° +80°C
Max working pressure	350 bar	Viscosity range	12-100 cSt
(<0.1 s)Max peak pressure	400 bar	Filtering ISO 4406 $\beta_x=75$	20/17 25 $\mu\text{m}$
T port max pressure	5 bar	Weight	5.1 kg
Mineral oil	ISO VG 46	Pneumatic working pressure	6 - 10 bar

Hydraulic schema



Pressure drop



Torque tightening  
Max  $30 \pm 5$  Nm

